

ARCHITECTURE

Portfolio



HOUSING

AT BUTTIBORI NAGPUR

The project was to design CEAT Township for factory employs includes all groups- LIG, MIG, HIG with amenities space and other facilities.

With the proper circulations and proper zoning

CONCEPT

The idea was to design for the purpose of balancing the real and the virtual. The creation of useful, Simple ways to encourage -age physical activities in home makes the housing seems alive. Spending time outdoor importantly reduces the exposure in indoor air, which is often polluted by those of different artificial materials

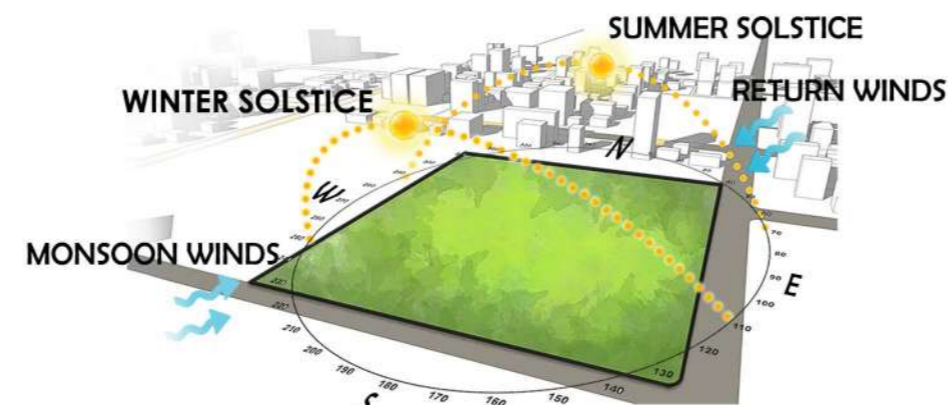
KEY FEATURES

Each group shared the open space which is within 10 min distance. The immediate availability of safe green space supports healthier physical and psychological development of children.

SITE DESCRIPTION

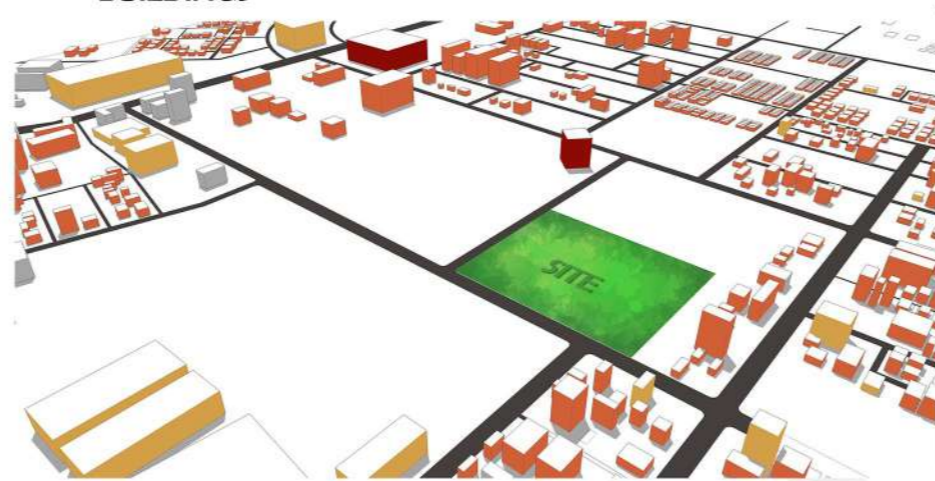
The site is located in well developed Industrial zone of Buttibori Nagpur.

The surrounding consists of a number of residential schemes, housing societies and some portion of slum.

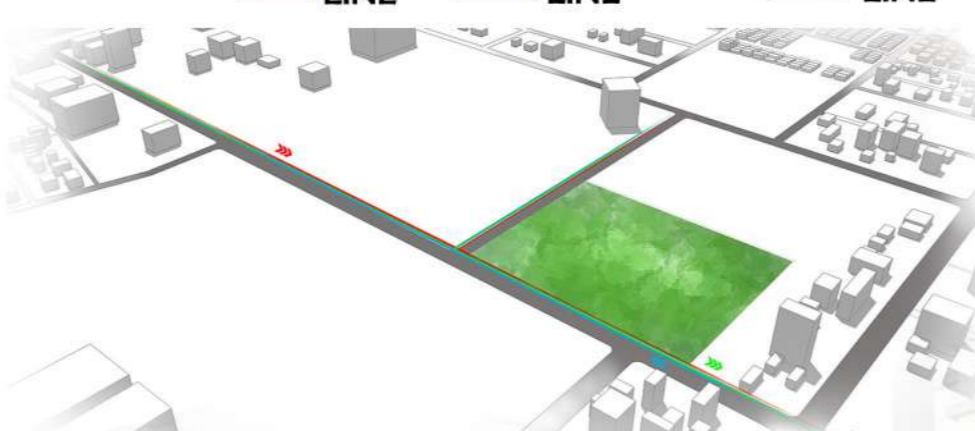


ZONING

- EDUCATIONAL BUILDINGS
- RESIDENTIAL BUILDINGS
- COMMERCIAL BUILDINGS



- SITE SERVICES**
- WATER LINE
 - ELECTRICAL LINE
 - SEWER LINE

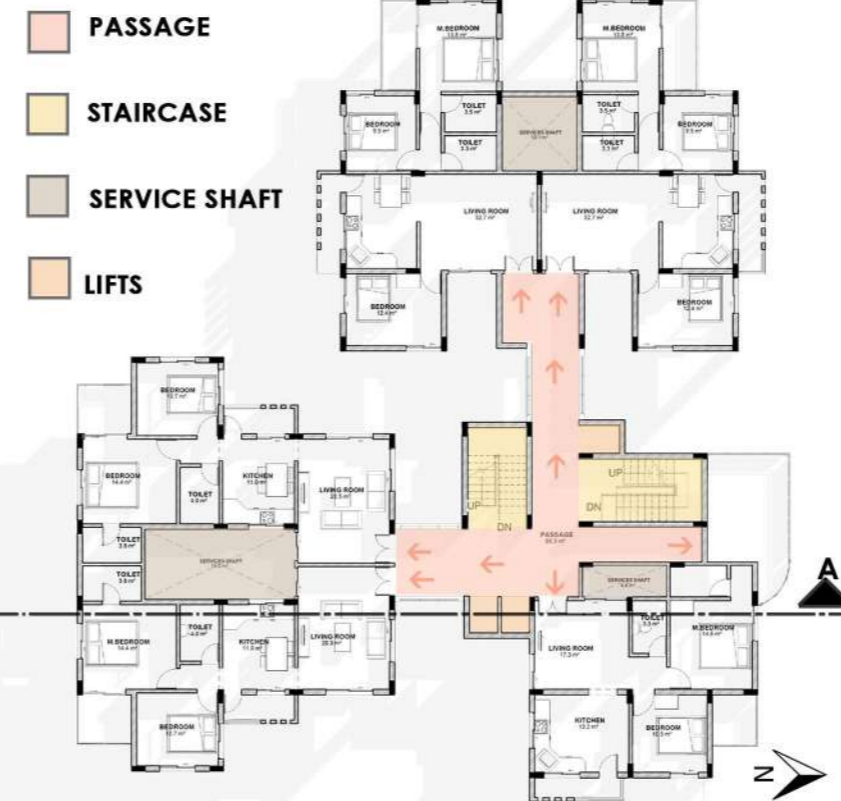


SITE PLAN



ZONING

MIG-HIG CLUSTER PLAN



LIGHTING ANALYSIS



MIG CLUSTER PLAN



SECTION AA



WEST SIDE ELEVATION

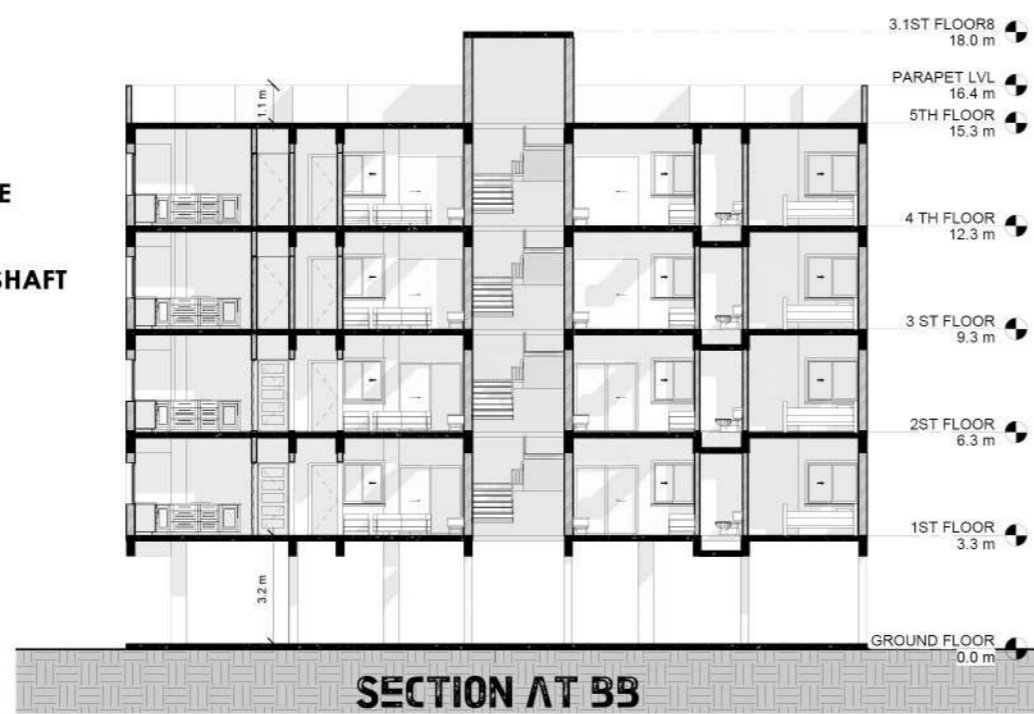


WEST SIDE ELEVATION

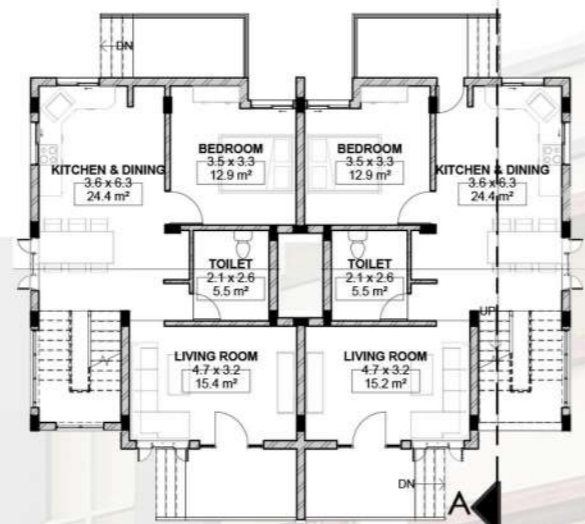
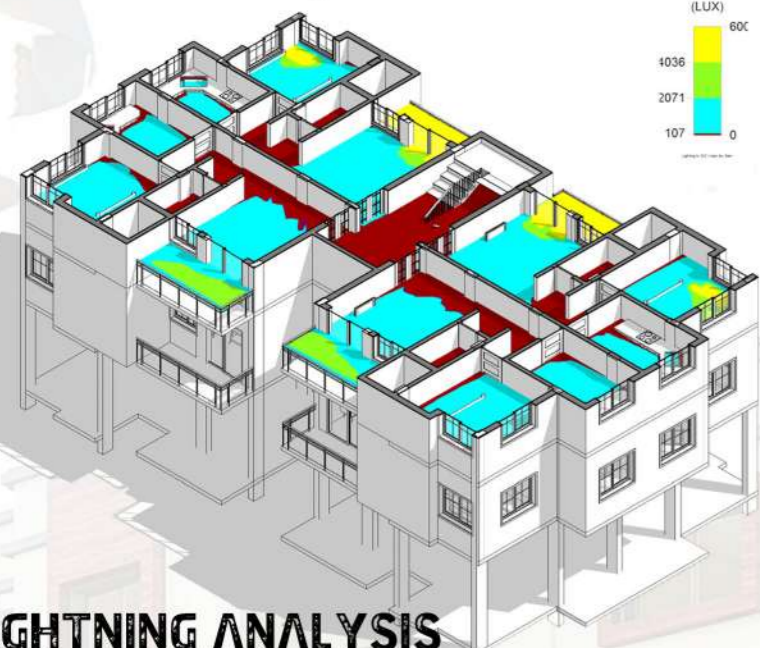
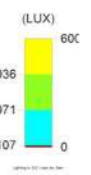
NORTH SIDE ELEVATION

LIG CLUSTER PLAN

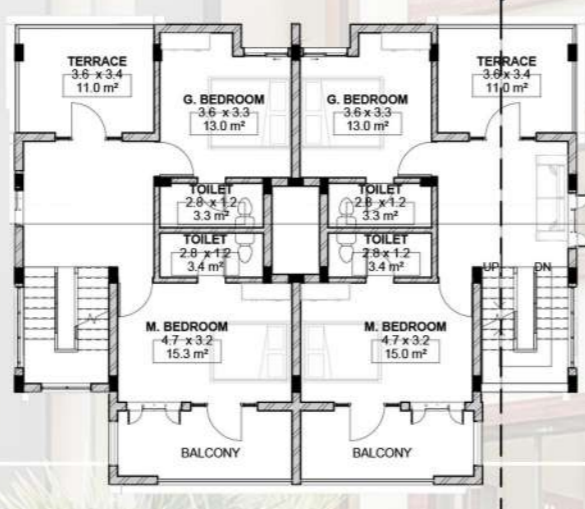
- PASSAGE
- STAIRCASE
- SERVICE SHAFT
- LIFTS



TWIN BUNGALOW PLAN

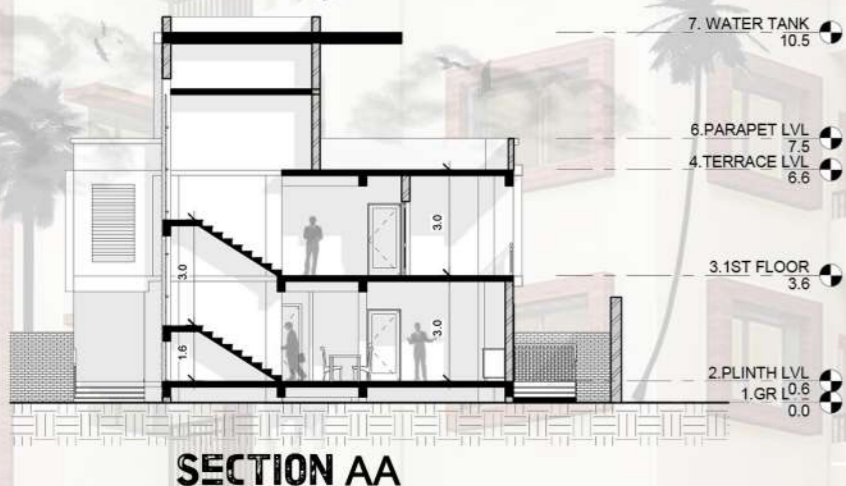


GROUND FLOOR PLAN



FIRST FLOOR PLAN

LIGHTNING ANALYSIS



SECTION AA

MIG ZONE VIEW



TWIN BUNGALOW VIEW



CANCER HOSPITAL

AT AUNDH PUNE

LOCATION

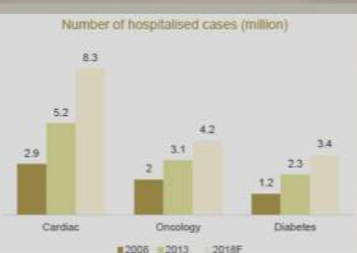


The project was to design Cancer Hospital at Aundh Pune. With the proper circulations and proper zoning

NEED FOR CANCER HOSPITAL

These health analysis and studies can be grouped into three main areas, which are

- Different diseases
- Distribution of hospital in different areas
- Health care facility and utilization



SITE JUSTIFICATION

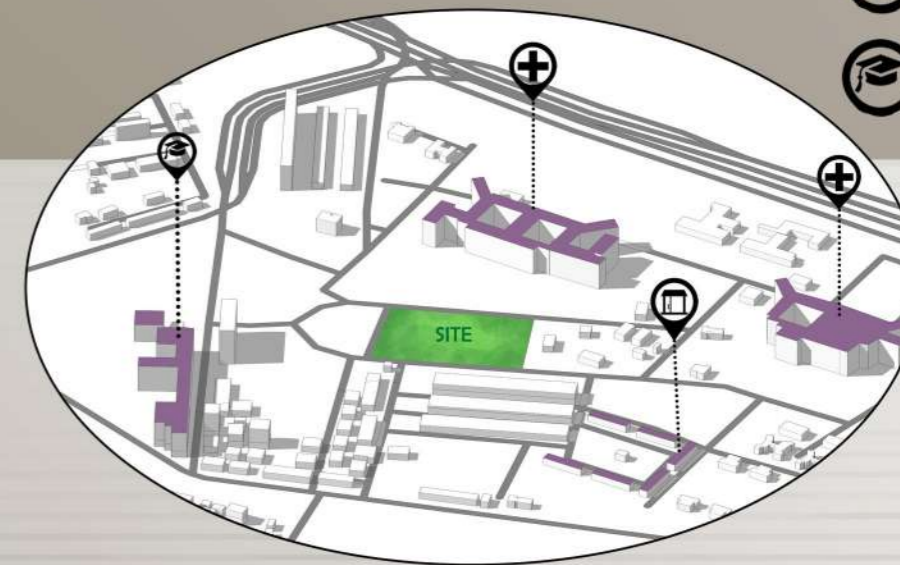
Although the central part of Pune is well served with the Hospital. The western side of Pune in ward like the confluence area of Aundh and Karve road are lacking in hospital services.

FACTORS FAVOURING DEVELOPMENT OF HEALTHCARE SECTOR IN PUNE CITY

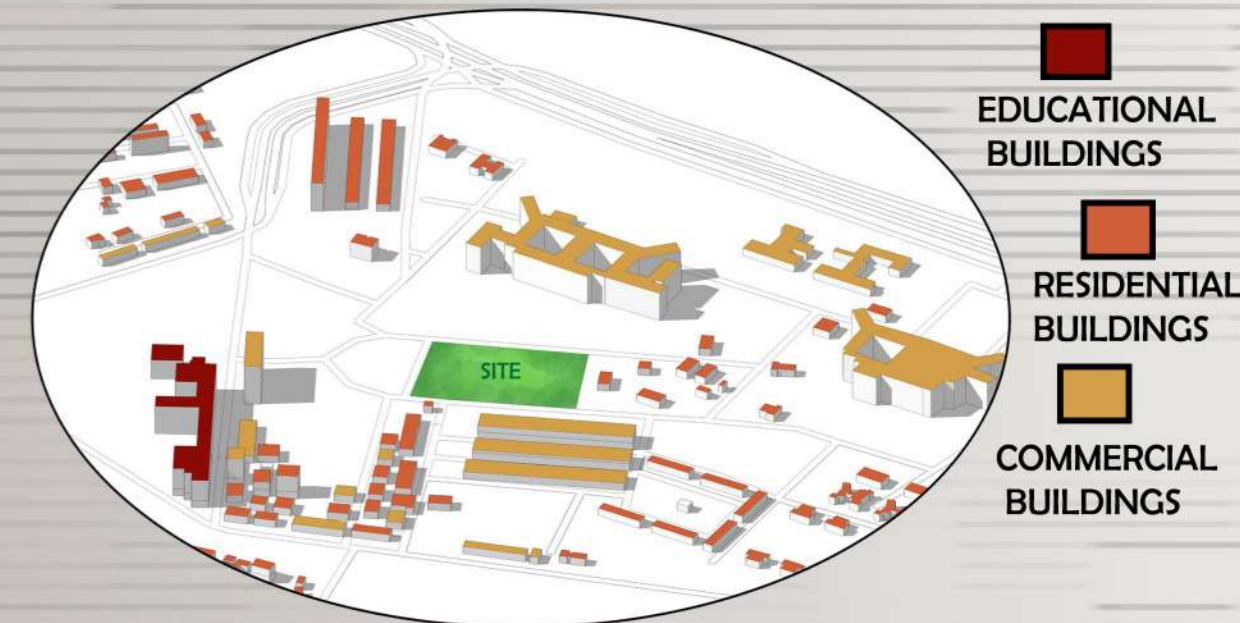
- Pune healthcare market is getting healthier, thanks to its population base of Around 5 million and growing IT, BPO and Education Sector.
- It is becoming a Metro city and pacing up with Mumbai. This has been a driver for the growth of organized hospitals.
- The unique feature of low cost treatment and dental tourism has also contributed to this growth.
- The cost of treatment here is very affordable, i.e.

LANDMARKS

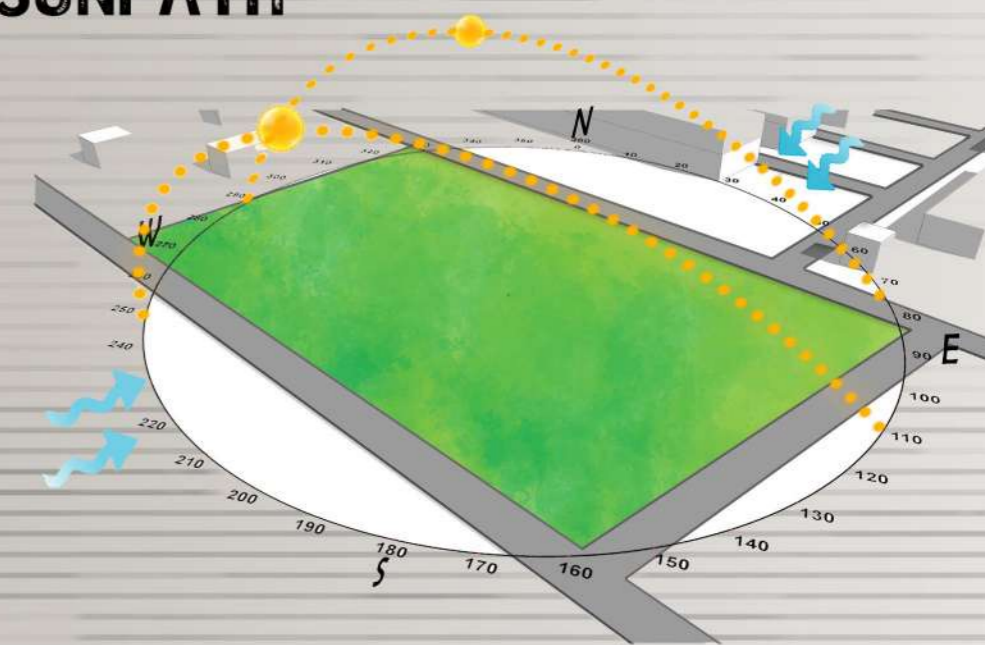
- HOSPITALS
- HOSTEL
- EDUCATIONAL



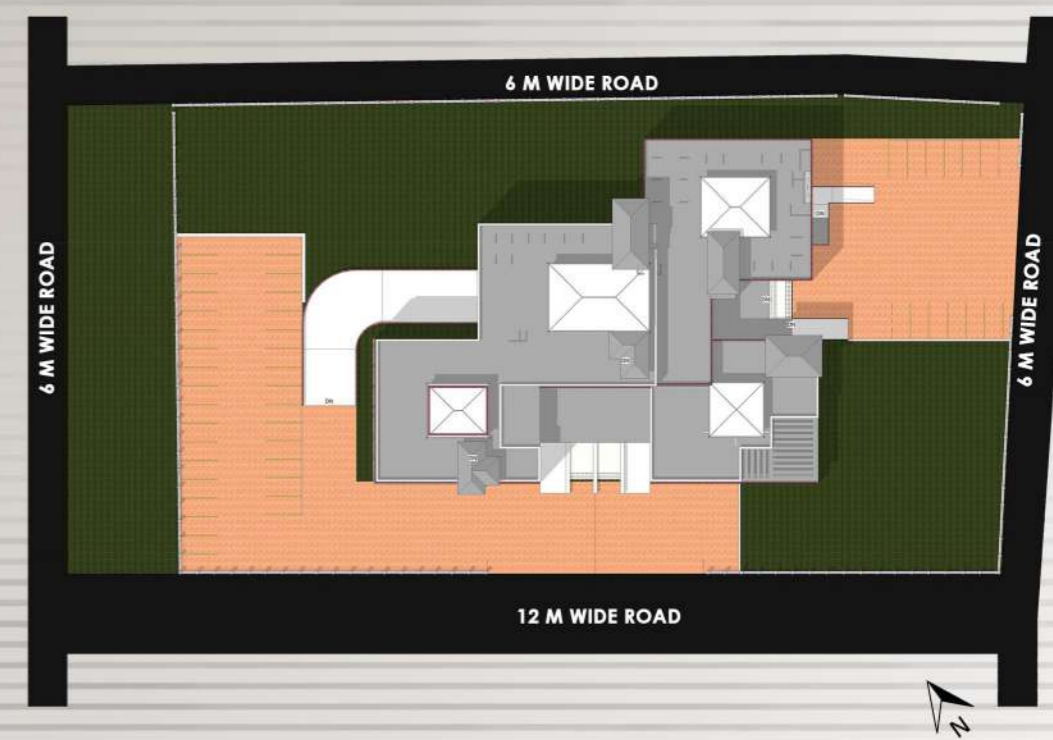
ZONING



SUNPATH



SITE PLAN



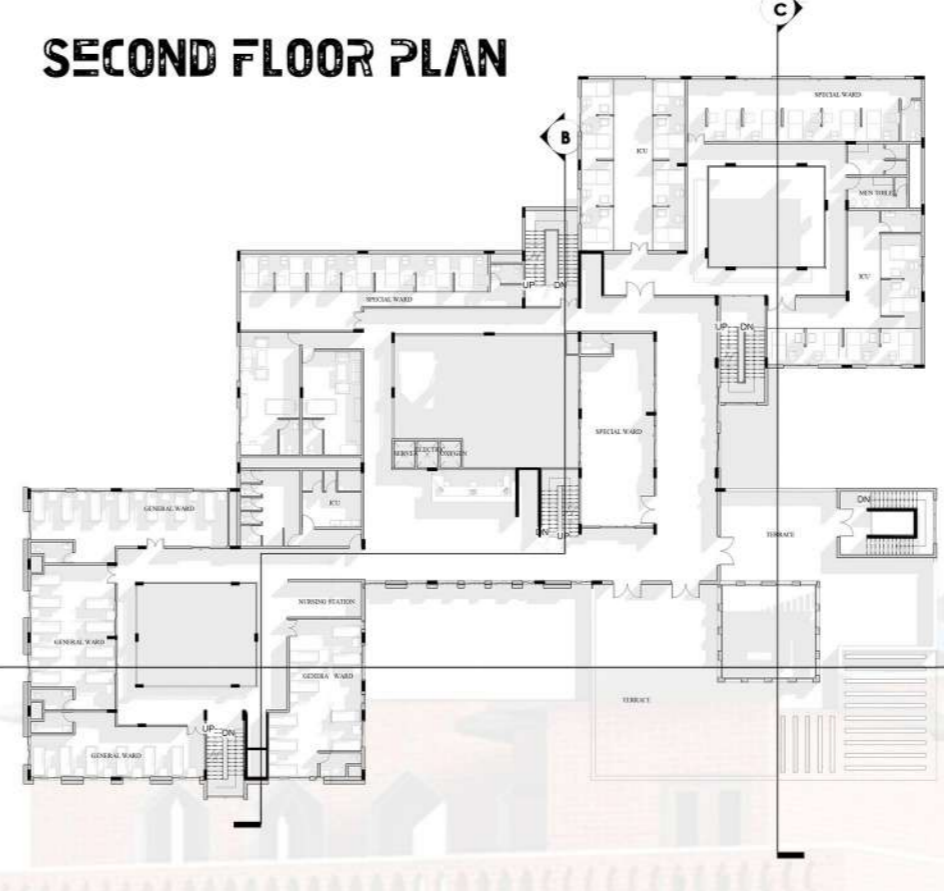
GROUND FLOOR PLAN



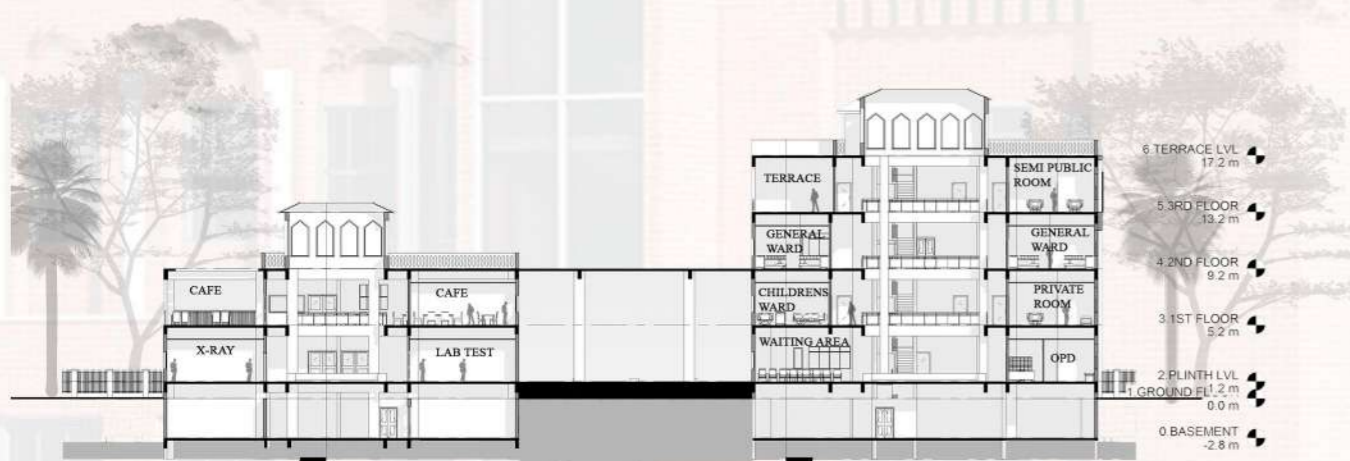
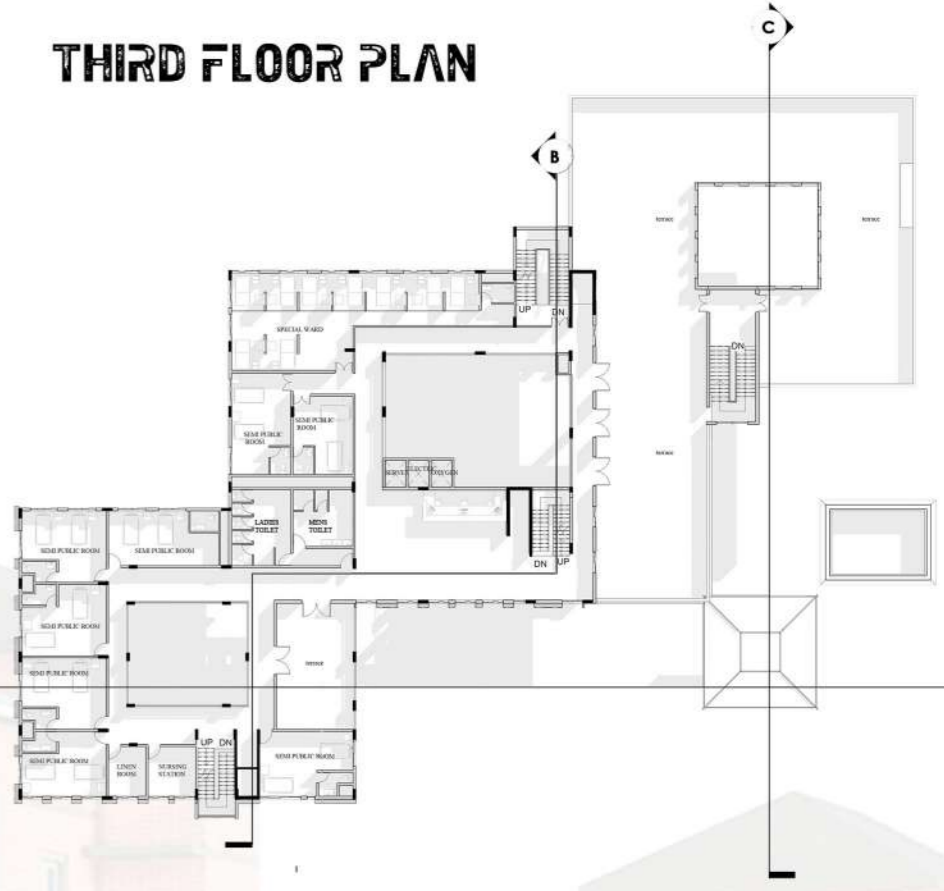
FIRST FLOOR PLAN



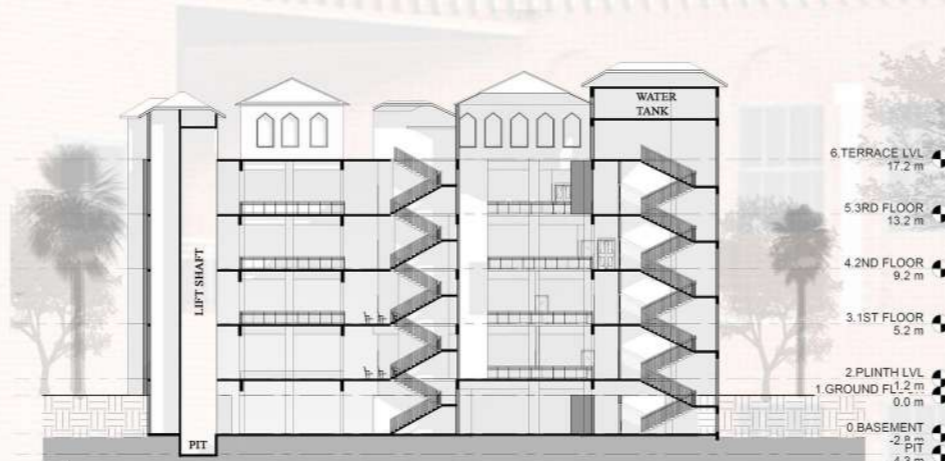
SECOND FLOOR PLAN



THIRD FLOOR PLAN



SECTION AT AA



SECTION AT BB



SECTION AT CC



LEFT SIDE ELEVATION



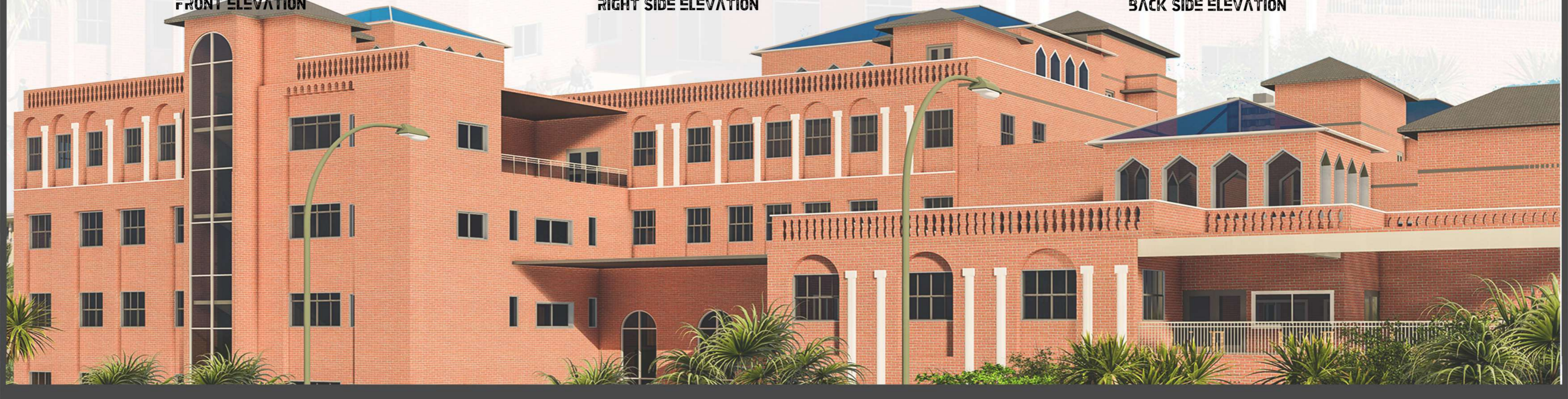
FRONT ELEVATION



RIGHT SIDE ELEVATION



BACK SIDE ELEVATION



EXTRACURRICULAR

PAINTINGS SKETCHES



PHOTOGRAPHY

